



173 Flanders Road
Westborough, MA 01581
ph 888-467-2836
fax 877-297-2836

Innovations in plumbing and heating . . .

Air Eliminators

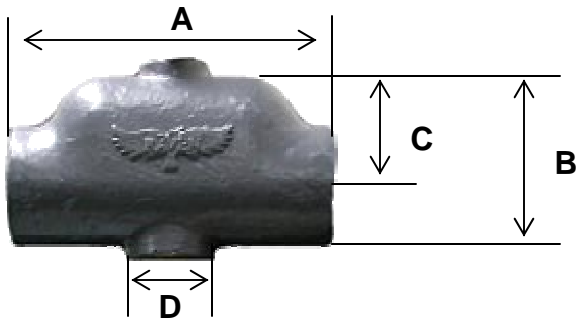
Size: 1" and 1 1/4"

Model:

AIRELIM1
AIRELIM114

Features:

- One piece, Cast Iron body construction
- 1/2" Female threaded connection for expansion tank
- 1/8" Female threaded connection for float vent
- Maximum Operating Pressure: 125 PSI
- Maximum Operating Temperature: 300°F (135° C)
- Recommended Flow Rate: 4 ft./sec.
- Maximum Flow Rate: 8 ft./sec.



Dimensions:

MODEL	DIMENSIONS			
	A IN.	B IN.	C IN.	D IN.
AIRELIM1	6"	3"	2"	1/2"
AIRELIM114	6 1/8"	3 7/16"	2 1/4"	1/2"